

FROM AUGUST 4TH TO 15TH
GRAND CASINO KNOCKE - BELGIUM

KNOCKE **ART FAIR**

RAJI BAMIDELE
ZEMBA LUZAMBA
TSUYU BRIDWELL

BOOTH B5

GALERIE STUDER



RAJI BAMIDELE

Raji Bamidele is a Nigerian contemporary artist who merges hyperrealism, with figurative and conceptual creations which he calls «puzzled realism». The multi-disciplinary approach to his work, which weaves differing materials and methods belonging both to contemporary and modern art forms, calling into question the existence of time and being.

Raji Bamidele is a multifaceted visual artist born to Okun parents from Kogi State, Nigeria. Despite his passion for art, he had to keep his talent a secret during his primary school years, as art was not taken seriously and was perceived as a playful activity. He later went in to attend secondary school in Lagos, Nigeria, the cultural and artistic hub of the country.

To avoid staying idle, he pursued a 4-months diploma in Computer Science in Abuja, the capital of Nigeria, before enrolling at the University of Lagos to study Surveying and Geoinformatics, before transferring to Actuarial Science, in which he obtained his first degree. As the eldest of 6 siblings, he had to take on the role of being the man of the house after losing his father at a young age. These experiences as a young man served as the foundation for his inspiration as a self-taught artist. It took significant effort to convince his family to accept his chosen path and passion for art, as he spent a significant amount of time honing his skills in his Lagos-based studio.

His art is strongly influenced by natural laws, mathematical and scientific principles, and philosophical beliefs and scientific theories. He focuses on examining the everyday innermost activities of mankind and seeks to instill a divine order in all that he creates. He blends hyperrealism, figurative and conceptual creations, which he refers to as «Afro-Contemporealism», with his unique techniques of gold leafing, embellishment, and texturing.

His multi-disciplinary approach has earned him numerous accolades, including the Centre for Contemporary Art, Lagos Prize at the 2015 Life in My City Art Festival (LIMCAF), where he won the overall best (Lagos Entry). He also won the Best use of multimedia award at the 2017 LIMCAF. In 2019, he was crowned the winner of the 34th Absa L'Atelier Ambassadorship, held during the World Economic Forum (WEF) in Cape Town.

In 2017, he was awarded the French Embassy Young Talents Award (Y.T.A), Prix de la Jeune Creation de L'Ambassade de France, as part of the LIMCAF 2017. Raji, as he is fondly called, has established himself as a prominent contemporary Nigerian artist, whose works have been showcased in various exhibitions both locally and internationally.



RAJI BAMIDELE

SO IT IS WITHOUT 1
Oil painting, Acrylic and Gold Foil on Canvas
153 x 182 cm

12 500 €



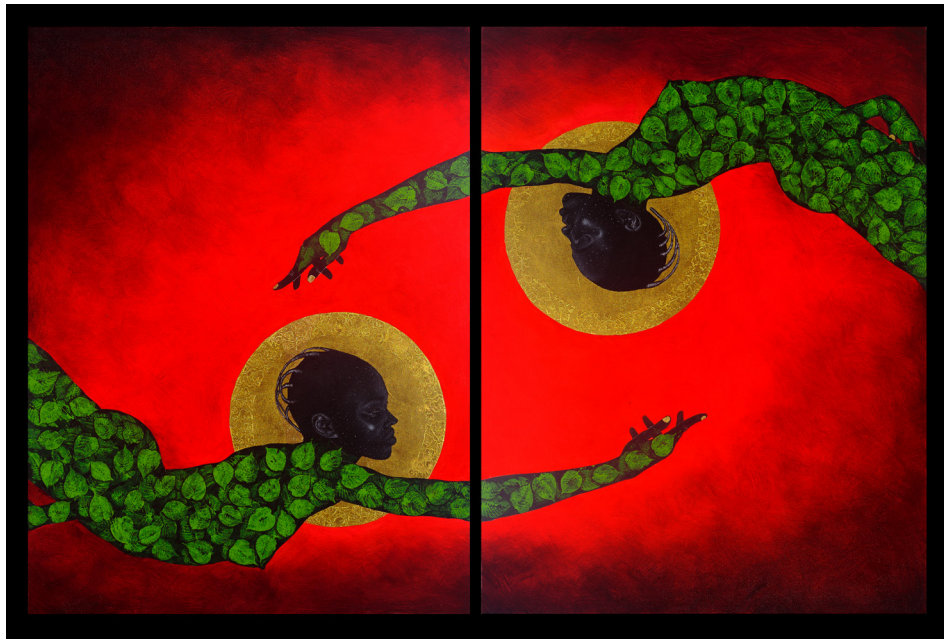


RAJI BAMIDELE

SO IT IS WITHOUT 2

Oil painting, Acrylic and Gold Foil on Canvas
153 x 182 cm

12 500 €



RAJI BAMIDELE

AS ABOVE, SO BELOW 1 - DIPTYCH
Oil painting, Acrylic and Gold Foil on Canvas
121,5 x 182 cm

10 000 €





RAJI BAMIDELE

IWO (YOU)
Oil painting, Acrylic and Gold Foil on Canvas
91 x 121,5 cm

5 000 €



RAJI BAMIDELE

THE ADMONITIONESSE (MOTHERS WHO CAUTION AND ADMONISH)
Oil painting, Acrylic and Gold Foil on Canvas
41 x 33 cm

1 800 €



RAJI BAMIDELE

THE ADMONITIONESSE (MOTHERS WHO CAUTION AND ADMONISH)
Oil painting and Acrylic on Canvas
41 x 33 cm

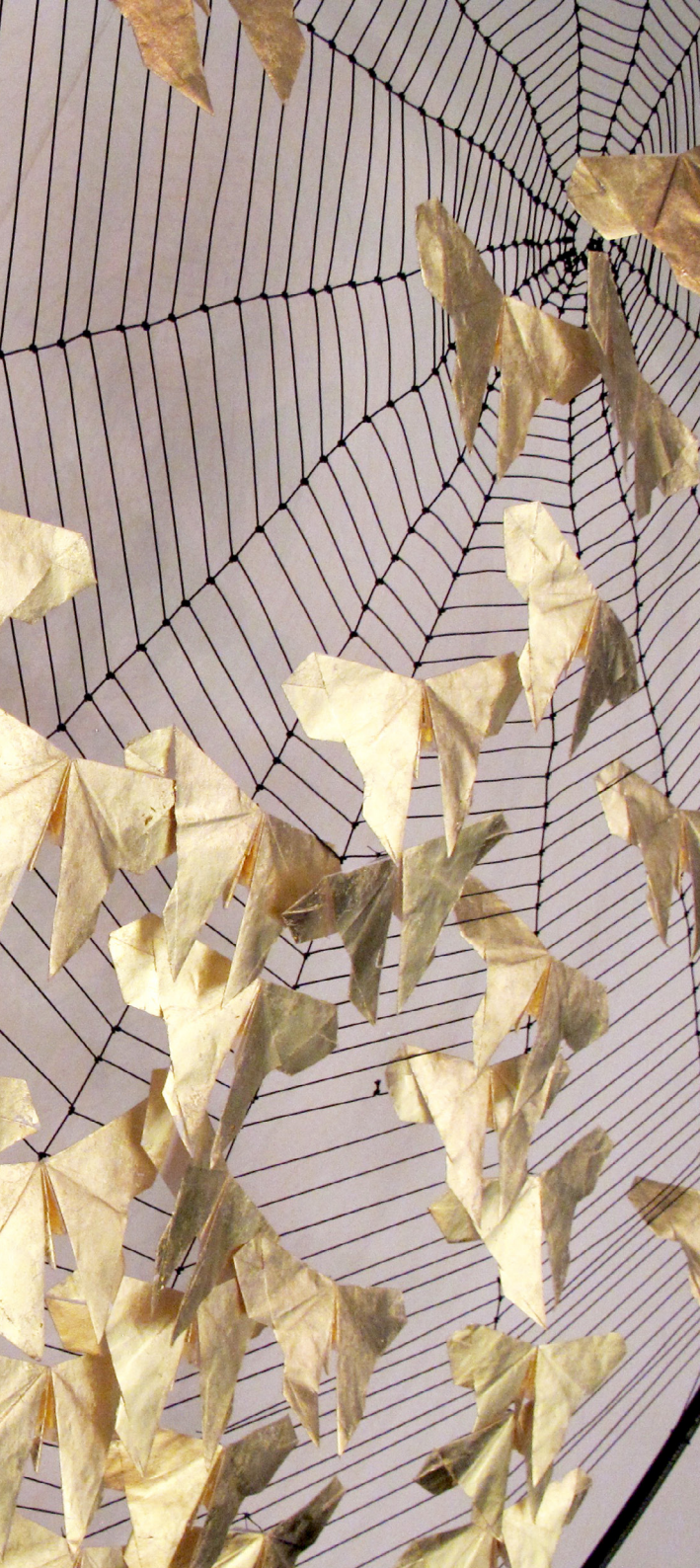
1 800 €



RAJI BAMIDELE

THE ADMONITIONESSE (MOTHERS WHO CAUTION AND ADMONISH)
Oil painting and Acrylic on Canvas
41 x 33 cm

1 800 €



TSUYU BRIDWELL

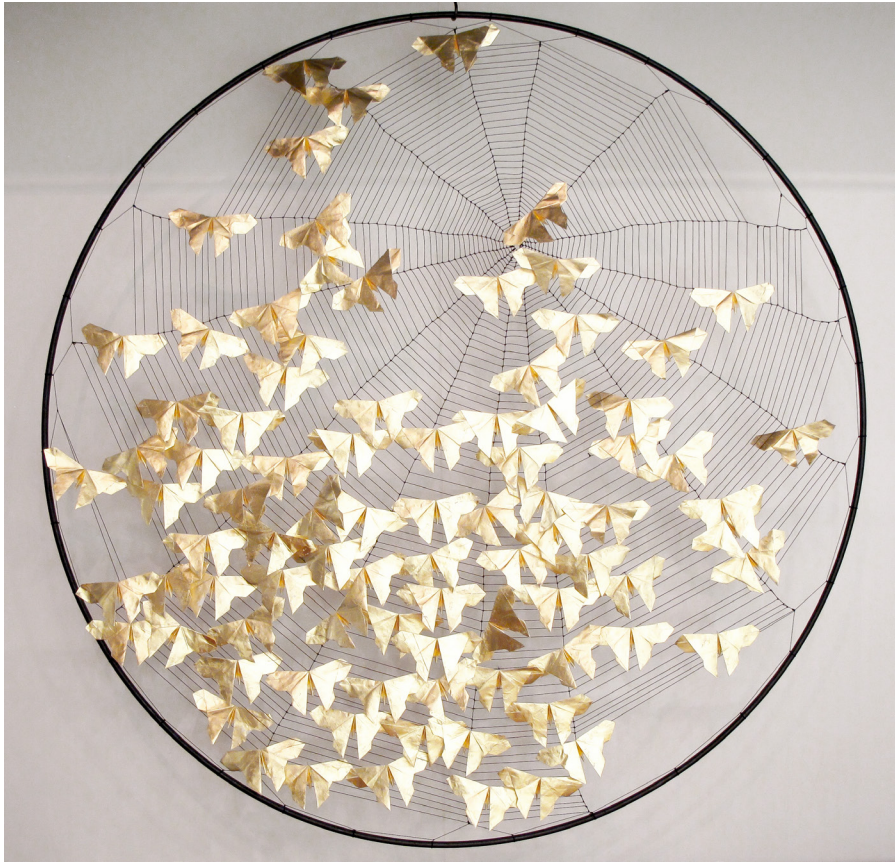
Tsuyu Bridwell draws inspiration from ancestral beliefs and rituals, expressing the force and fragility of life, while also questioning superstitions associated with these.

Working across media, she uses traditional crafts from Japan, Korea and France to create installations and sculptural objects that confront questions of collective memory and the representation of Nature.

Her production is centered around the replication of multiple objects, an adherence to traditional craft, and an aesthetic exigence in her works - all of which contribute to a sentiment the artist develops to focus her intention. She presents intricate natural subjects to create a contemporary phantasmagoria : The Danse of the Cocoons, Sentôchô (thousand-butterfly suspension), a school of jellyfish, spiderwebs, mineral sculptures...

Born in Tokyo to a Korean father and Japanese mother, Tsuyu studied dance and music at the Centre de danse international Rosella Hightower in Cannes, France. She went on to study drama and theater at the Conservatoire National Supérieur d'art dramatique de Paris, working some years as an actor. Her career in the performing arts has enriched her work as a visual artist, facilitating an organic flow of expression between her pieces and their audience.

Her monumental installations are spectacular and provoke a meditative visual experience. Her works initiate the viewer to a magnified world of Nature's wonders and the delicate equilibrium of an ecosystem of force, fragility, beliefs, and human desires.



TSUYU BRIDWELL

DREAMS CANNOT BE CAUGHT GOLD - 2015
Steel, 24kt Gold Foil, Nylon Thread and Mulberry Fiber Paper
Diameter 150 cm

6 500 €





TSUYU BRIDWELL

SENTÔCHÔ II - 2019

Paper Origami in Japanese Mulberry Fiber and Nylon Thread
Length 4 meters, Diameter 80 cm

13 500 €



ZEMBA LUZAMBA

A contemporary realist, Luzamba's paintings hover on the border of satire, at once appearing to mimic the colonial lifestyle of the post-colonial elites while simultaneously bringing it into question. Is this pure observation, aspiration or critique?

Although born and raised in the DRC, Luzamba moved to South Africa to pursue his career as an artist and this experience of migration has allowed him an intimate and sympathetic view of migrant communities which has informed many of his works over the past 15 years.

Situating his subjects in bold fields of colour which disassociate them from concrete spaces and times allows Luzamba to portray certain situations as universal ideas, giving the viewer the freedom to interpret these scenes within a way that is relevant to their own contexts. This combined with his skilful observation of body language emphasizes the immediacy and proximity occupied by the viewer to his work.



ZEMBA LUZAMBA

BUKARI, 2023
Oil painting on Canvas
110 x 130 cm

10 500 €



ZEMBA LUZAMBA

MUNYERE, 2023
Oil painting on Wood Panel
60 x 53 cm

4 500 €



ZEMBA LUZAMBA

KITENDISTE, 2023
Oil painting on Wood Panel
60 x 53 cm

4 500 €

KNOKKE ART FAIR **RAJI BAMIDELE**
ZEMBA LUZAMBA
TSUYU BRIDWELL
BOOTH B5

GALERIE STUDER

CONTACT

+33 6 35 58 87 76 | +971 050 886 2849 | +225 07 67 43 01 39